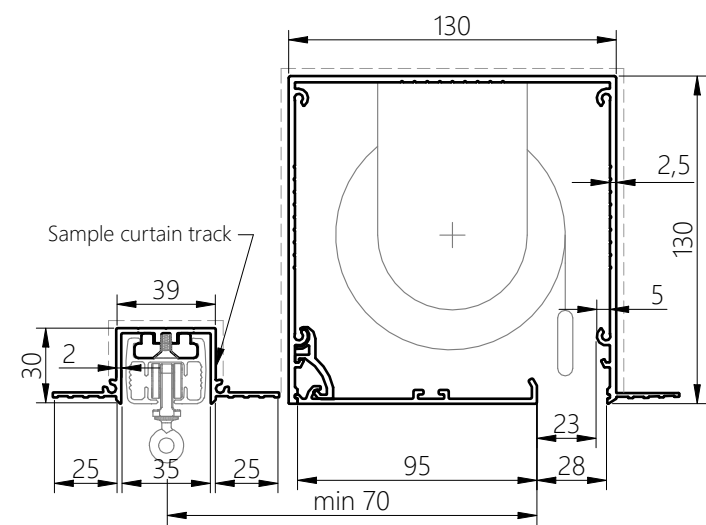


Blindspace® S130x130NS with TrackTrim®
for Large Roller Blind and Curtain Track

TRACK PROFILE TT1F & HEAD BOX S130x130NS

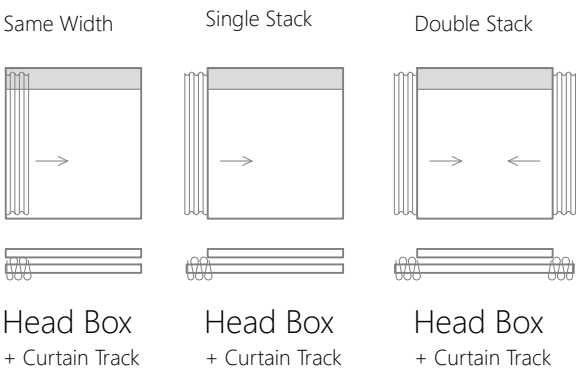


PRODUCT REFERENCE

S130x130NS
&
TrackTrim®

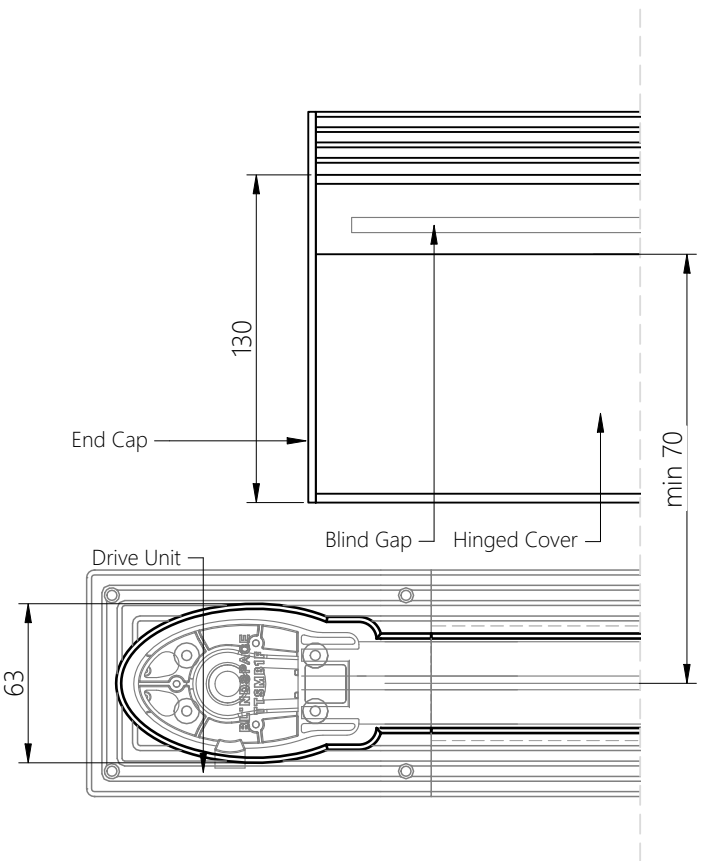
For further details and all possible configurations visit
[blindspace.com](https://www.blindspace.com)

CONCEALMENT CONFIGURATION

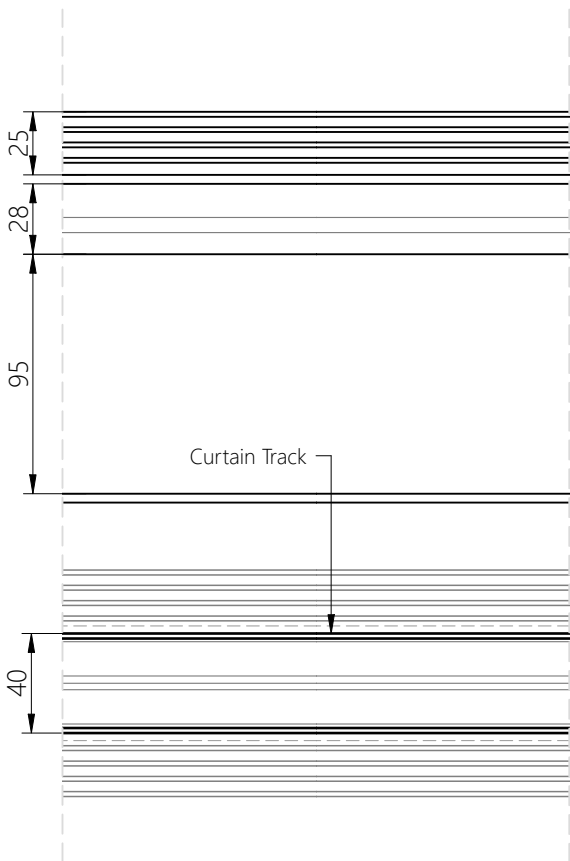


For curtain stack sizes, please consult with curtain track
specifications

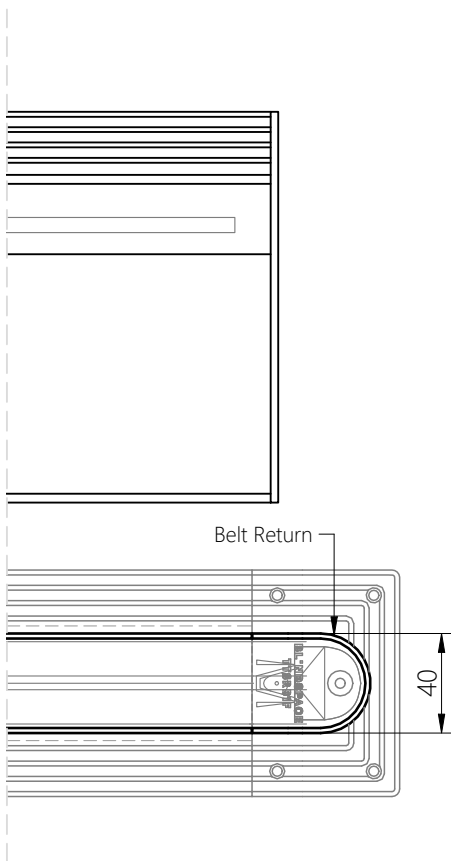
MOTOR BOX TTSMB1F & HEAD BOX S130x130NS



TRACK PROFILE TT1F/TT2F & HEAD BOX



RETURN BOX TTSRB1F & HEAD BOX



1:3 scale

Product	Blindspace S130x130NS & TrackTrim®
Description	Recessed box with optional flanges and hinged cover to conceal blinds flush with wall or ceiling finished surface.
Blind & Curtain sizes	Please see size chart and supplier details for blind & curtain sizes such as max. width, height and area.
Finishes	Box Provided in RAL 9016 (white) Optional powder coating to other RAL colours available. Track White to be plastered in and decorated at site to match ceiling.
Material	Box Powder Coated Aluminium, EN 6063 T6 Track EN 6063 T6, End set PLA Thermoplastic Polyester
Optional accessories	For further details visit blindspace.com
Box length	6000mm Cut to size for shorter lengths. Spliced together for longer lengths.
Track length	2000mm Cut to size for shorter lengths. Spliced together for longer lengths.
Installation	Please refer to Sample Installation Drawings available both in PDF and DWG at blindspace.com
Print date	2025/07/03
Page size	ISO A3 420x297
Print file	blindspace s130x130ns with large roller & tracktrim.dwg